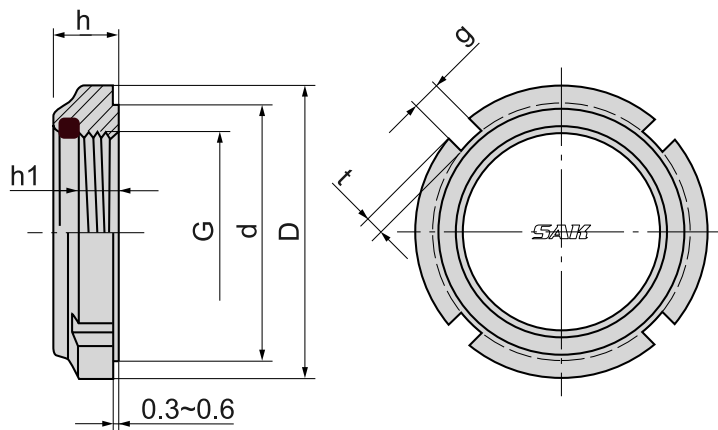




▲Material: SS400

▲Nylon material: PA6

▲Standards: M10~M100



GUK Self-locking nuts are self-locking due to their nylon PA6 insert. Therefore, they can also be used as retaining nuts and can be used multiple times. The thread series mainly corresponds to cylindrical bearing slotted lock nuts according to DIN 981.

GUK self-locking nuts add a nylon insert that sits on top of the nut to deform on the mating thread and catch the bolt or stud. This provides a locking function that creates resistance - or primary torque - to lock the nut in place and resist vibration.

In addition to the nylon PA6 self-locking feature, GUK self-locking nuts are equipped with four equally spaced grooves on the outside diameter of the nut, which allow a hook wrench to easily tighten or loosen the nut. These self-locking nuts are not suitable for high temperature over 100 degree applications. For further information, please contact us immediately.

Type	G	Dimension (mm)						Grooves	Weight (kg)
		h	h1	D	d	g	t		
GUK00	M10×0.75P	7.4	4.5	18	15	3	1.5	4	0.009
GUK01	M12×1.0P	7.4	4.5	21	18	3	1.5	4	0.009
GUK02	M15×1.0P	8.4	5.5	24	21	4	1.5	4	0.012
GUK03	M17×1.0P	8.4	5.5	28	24	4	2	4	0.018
GUK04	M20×1.0P	9.4	6.5	32	27	4	2.5	4	0.025
GUK05	M25×1.5P	10.3	6.5	38	33	5	2.5	4	0.035
GUK06	M30×1.5P	10.9	6.5	44	38	5	3	4	0.046
GUK07	M35×1.5P	11.1	7	50	44	5	3	4	0.062
GUK08	M40×1.5P	12.1	8.2	56	50	6	3	4	0.08
GUK09	M45×1.5P	12.1	8.2	62	55	6	3.5	4	0.095
GUK10	M50×1.5P	12.7	8.5	68	61	6	3.5	4	0.13
GUK11	M55×2.0P	13.2	8.5	75	68	7	3.5	6	0.16
GUK12	M60×2.0P	13.2	8.5	80	73	7	3.5	6	0.17
GUK13	M65×2.0P	14.3	9.5	85	77	7	3.5	6	0.185
GUK14	M70×2.0P	14.3	9.5	92	84	8	4	6	0.23
GUK15	M75×2.0P	15.3	10.5	98	89	8	4.5	6	0.27
GUK16	M80×2.0P	16.3	11.5	105	96	8	4.5	8	0.34
GUK17	M85×2.0P	17.3	12.5	110	100	8	5	8	0.39
GUK18	M90×2.0P	17.5	12.5	120	110	10	5	8	0.54
GUK19	M95×2.0P	18.5	13.5	125	115	10	5	8	0.6
GUK20	M100×2.0P	19.5	14.5	130	120	10	5	8	0.68

- Unnecessary to add any tooth lock washer.
- Unnecessary to mill a keyway on the shaft and shorten its assembled time.
- Allow to be used after repeatedly screwing.
- Bearing any vibration and ensuring the integrated resistance when not tightened.
- The surface is galvanized to prevent rust.